



Floor 9,Building B,Tsinghua Hi-Tech Park,
Nanshan District,Shenzhen,Guangdong,
518000,China

E-mail: export@kaadas.com
Tel: +86-755-86726650

2020
PRODUCT CATALOGUE



Kaadas
Access to your Future !

Kaadas
Access to your Future !



About Kaadas

With dedication to lock industry for over 30 years, Kaadas is a certified high-tech company focusing on high-end and smart electronic locks including product research, development, manufacturing, sales and after-sales service. The company is headquartered in "China Silicon Valley" Shenzhen, Guangdong, China.

Adhering to the faith of Innovation, Smart, Quality, Integrity and Craftsmanship, Kaadas is devoted to offering innovative and high-quality smart locks for customers and to making life convenient, secure and intelligent. With deep understanding of global customers' needs, our product portfolio covers mortise lock, rim lock, and deadbolt & latchbolt lock etc., meeting diverse regional applications and standards in residential and commercial markets. We also provide connected products and solutions with APP & Cloud service using cutting-edge technologies to manage and monitor your lock from anywhere and anytime. At present, Kaadas has more than 2,000 employees and tens of thousands of global sales networks. Annual sales volume ranks top 3 worldwide and first in China.

Kaadas, access to your future!

K.

Research and Development

Kaadas has more than 200 research and development engineers engaged in electronics, mechanical, industry design, firmware, testing, APP&cloud and so on. Kaadas also has several advanced labs including many kinds of strength tests, environment tests, electronic tests, life cycle test and finish tests etc. With many years' continuous investment on product research and development, we have got over 400 Chinese & international patents and software copyrights, and many products won global industrial design awards such as iF and Reddot. Our tens of years' expertise in lock industry enables us to be a leader in global smart lock industry and adjacent products & solutions.



Manufacturing Footprints

Three manufacturing plants are located in Zhejiang and Guangdong province. We have leading automatic assembly lines, CNC machining equipments, die-casting machines and plating lines. All plants are certified ISO 9001-2015 and manufacturing capacity is over 2 million sets annually, ranking top 3 worldwide.

Kaadas



Kaadas × *Lamborghini*
LEGEND

K13F

3D Face Recognition Push-Pull Lock



Fingerprint



PIN code



Card



Face Recognition



Mechanical Key

Kaadas



Security Functions

Auto Locking | Away Mode | Fake PIN Code | Lockout Mode |
One-Time PIN Code | Privacy Mode | Safe Handle

Alarming/Indication

Low Voltage | Wrong-Entry Alarming | Jam Alarming |
Tamper Alarming



Color

Gold

Copper

Product Specification

Main Material	Zinc Alloy	Keypad Type	Touchpad
Mortise Type	924C	Code Length	6-12
Stainless Steel Deadbolt	Yes	Code Quantity	11 (1 Master Code; 10 User Codes)
Vertical Rods	No	Working Voltage	DC 7.4V
Voice Guide	Yes	Battery	Lithium Battery, 5000mA/h
Handing	Universal	Working Temperature (°C)	-20-60
Emergency Cylinder	Super Grade B	Emergency Power	5V Micro USB
Fingerprint Sensor	Semiconductor	RH (%)	20-90
Fingerprint Quantity	100	IoT Connection	Optional
Card Type	Mifare CPU Encrypted (Kaadas Exclusive)	Door Category	Wood, Anti-burglary Door
Card Quantity	100	Door Thickness (mm)	38-120
Face Recognition Quantity	20		

Kaadas



Kaadas × *Lamborghini*
LEGEND

K13W
Push-Pull Lock



Fingerprint



PIN code



Card



Mechanical Key

Kaadas



Security Functions

Auto Locking | Away Mode | Fake PIN Code | Lockout Mode |
One-Time PIN Code | Privacy Mode | Safe Handle

Alarming/Indication

Low Voltage | Wrong-Entry Alarming | Jam Alarming |
Tamper Alarming



Color
Gold
Copper
Silver

Product Specification

Main Material	Zinc Alloy	Keypad Type	Touchpad
Mortise Type	924C	Code Length	6-12
Stainless Steel Deadbolt	Yes	Code Quantity	11 (1 Master Code; 10 User Codes)
Vertical Rods	No	Working Voltage	DC 6V
Voice Guide	Yes	Battery	4 AA Alkaline Batteries (Max. Quantity: 8)
Handing	Universal	Working Temperature (°C)	-20-60
Emergency Cylinder	Super Grade B	Emergency Power	5V Micro USB
Fingerprint Sensor	Semiconductor	RH (%)	20-90
Fingerprint Quantity	100	IoT Connection	Optional
Card Type	Mifare CPU Encrypted (Kaadas Exclusive)	Door Category	Wood, Anti-burglary Door
Card Quantity	100	Door Thickness (mm)	38-120

Kaadas



K10-W

Push-Pull Lock



Fingerprint



PIN code



Card



Mechanical Key

Kaadas



Security Functions

Auto Locking | Fake PIN Code | Lockout Mode | Privacy Mode

Alarming/Indication

Low Voltage | Wrong-Entry Alarming | Jam Alarming |
Tamper Alarming



Color

Copper

Gray

Product Specification

Main Material	Aluminum Alloy	Keypad Type	Touchpad
Mortise Type	924C	Code Length	6-12
Stainless Steel Deadbolt	Yes	Code Quantity	11 (1 Master Code; 10 User Codes)
Vertical Rods	No	Working Voltage	DC 6V
Voice Guide	Yes	Battery	8 AA Alkaline Batteries
Handing	Universal	Working Temperature (°C)	-20-60
Emergency Cylinder	Super Grade B	Emergency Power	5V Micro USB
Fingerprint Sensor	Semiconductor	RH (%)	20-90
Fingerprint Quantity	100	IoT Connection	Optional
Card Type	Mifare CPU Encrypted (Kaadas Exclusive)	Door Category	Wood, Anti-burglary Door, Steel
Card Quantity	100	Door Thickness (mm)	38-120



K20-F
3D Face Recognition Push-Pull Lock



Fingerprint



PIN code



Face Recognition



Mechanical Key



Security Functions

Auto Locking | Away Mode | Fake PIN Code | Lockout Mode |
One-Time PIN Code | Privacy Mode | Safe Handle

Alarming/Indication

Low Voltage | Wrong-Entry Alarming | Jam Alarming |
Tamper Alarming



Color

Copper

Gray

Product Specification

Main Material	Aluminium Alloy	Keypad Type	Touchpad
Mortise Type	924C	Code Length	6-12
Stainless Steel Deadbolt	Yes	Code Quantity	11 (1 Master Code; 10 User Codes)
Vertical Rods	No	Working Voltage	DC 7.4V
Voice Guide	Yes	Battery	Lithium Battery, 5000mA/h
Handing	Universal	Working Temperature (°C)	-20-60
Emergency Cylinder	Super Grade B	Emergency Power	5V Micro USB
Fingerprint Sensor	Semiconductor	RH (%)	20-90
Fingerprint Quantity	100	IoT Connection	Optional
Card Type	N/A	Door Category	Wood, Anti-burglary Door
Card Quantity	N/A	Door Thickness (mm)	38-120
Face Recognition Quantity	20		

Kaadas



K9

Push-Pull Lock



Fingerprint



PIN code



Card



Bluetooth



Mechanical Key



APP

Kaadas



Security Functions

Auto Locking | Privacy Mode | Fake PIN Code | Lockout Mode
Safe Handle

Alarming/Indication

Low Voltage | Wrong-Entry Alarming | Jam Alarming
Tamper Alarming



Product Specification

Main Material	Aluminum Alloy	Keypad Type	Touchpad
Mortise Type	924C	Code Length	6-12
Vertical Rods	No	Code Quantity	11 (1 Master Code; 10 User Codes)
Stainless Steel Deadbolt	Yes	Working Voltage	DC 6V
Voice Guide	Yes	Battery	4 AA Alkaline Batteries
Handing	Universal	Working Temperature(°C)	-20-60
Emergency Cylinder	Super Grade B	Emergency Power	5V Micro USB
Fingerprint Sensor	Semiconductor	RH (%)	20-90
Fingerprint Quantity	100	IoT Connection	Optional
Card Type	Mifare/13.56MHz	Door Category	Wood, Anti-burglary Door, Steel
Card Quantity	100	Door Thickness(mm)	38-120

Kaadas



L7
Lever Lock



Fingerprint



PIN code



Card



Bluetooth

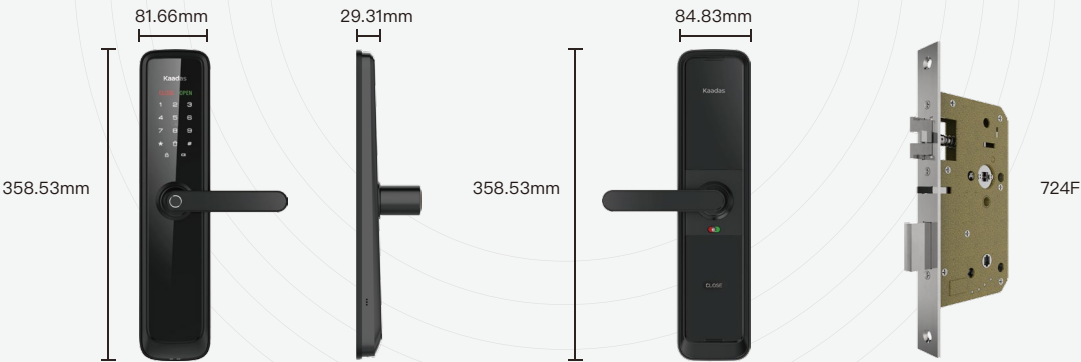


Mechanical Key



APP

Kaadas



Security Functions

Auto Locking | Privacy Mode | Fake PIN Code | Lockout Mode
Safe Handle

Alarming/Indication

Low Voltage | Wrong-Entry Alarming | Jam Alarming



Product Specification

Models	L7-5 L7-2	Card Quantity	100
Fingerprint	L7-5:Yes L7-2:No	Keypad Type	Touchpad
Main Material	Aluminum Alloy + Zinc Alloy	Code Length	6-12
Mortise Type	724F	Code Quantity	11 (1 Master Code; 10 User Codes)
Vertical Rods	No	Working Voltage	DC 6V
Stainless Steel Deadbolt	Yes	Battery	4 AA Alkaline Batteries
Voice Guide	Yes	Working Temperature(℃)	-20-60
Handing	Universal	Emergency Power	5V Micro USB
Emergency Cylinder	Super Grade B	RH (%)	20-90
Fingerprint Sensor	Semiconductor	IoT Connection	Optional
Fingerprint Quantity	100	Door Category	Wood, Anti-burglary Door, Steel
Card Type	Mifare/13.56MHz	Door Thickness(mm)	35-120

Kaadas



L8
Lever Lock



Fingerprint



PIN code

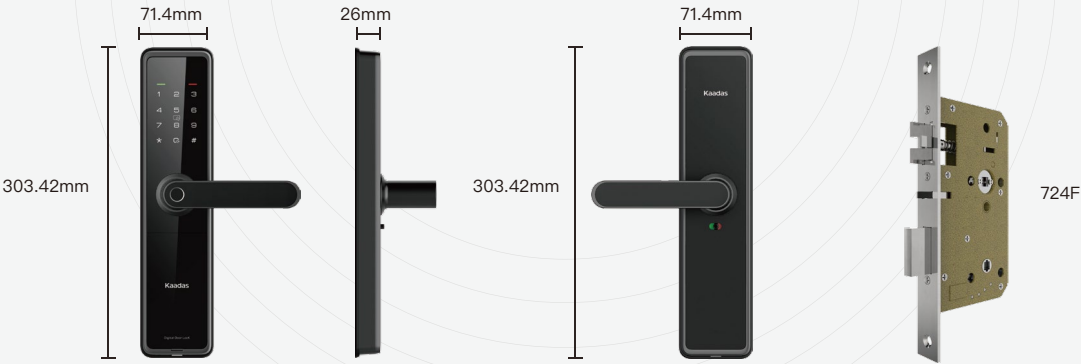


Card



Mechanical Key

Kaadas



Security Functions

Auto Locking | Fake PIN Code | Lockout Mode | Safe Handle

Alarming/Indication

Low Voltage | Wrong-Entry Alarming



L8-5

L8-2

Color



Black

Product Specification

Main Material	Aluminum Alloy	Keypad Type	Touchpad
Mortise Type	724F	Code Length	6-12
Stainless Steel Deadbolt	Yes	Code Quantity	11 (1 Master Code; 10 User Codes)
Vertical Rods	No	Working Voltage	DC 6V
Voice Guide	Yes	Battery	4 AA Alkaline Batteries
Handing	Universal	Working Temperature (°C)	-20-60°C
Emergency Cylinder	Super Grade B	Emergency Power	5V Micro USB
Fingerprint Sensor	L8-5: Yes L8-2: NO	RH (%)	20-90
Fingerprint Quantity	100	IoT Connection	N/A
Card Type	Mifare/13.56MHz	Door Category	Wooden, Anti-burglary Door, Steel
Card Quantity	100	Door Thickness (mm)	35-120

Kaadas



S100

Lever Lock



Fingerprint



PIN code



Card



Bluetooth

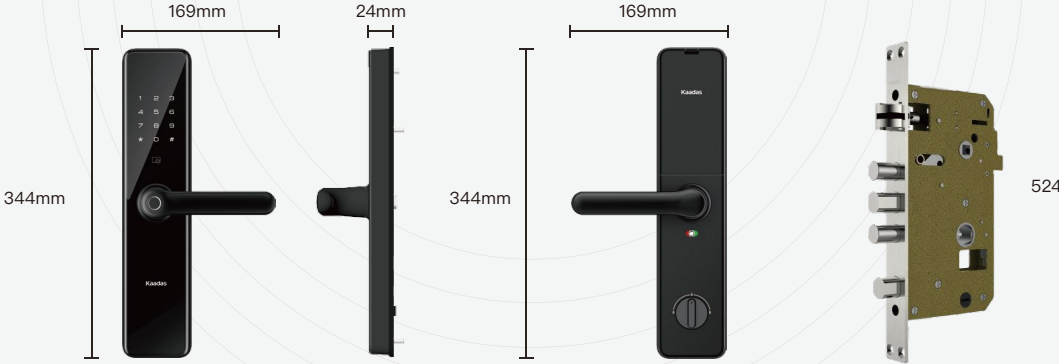


APP



Mechanical Key

Kaadas



Security Functions

Privacy Mode | Fake Pin Code | Lockout Mode | Safe Handle

Alarming/Indication

Low Voltage | Wrong-Entry Alarming









Color

Black

Product Specification

Main Material	Aluminum Alloy	Keypad Type	Touchpad
Mortise Type	524	Code Length	6-12
Stainless Steel Deadbolt	Yes	Code Quantity	11 (1 Master Code; 10 User Codes)
Vertical Rods	No	Working Voltage	DC 6V
Voice Guide	Yes	Battery	4 AA Alkaline Batteries
Handing	Universal	Working Temperature (°C)	-20-60°C
Emergency Cylinder	Super Grade B	Emergency Power	5V Micro USB
Fingerprint Sensor	Semiconductor	RH (%)	20-90
Fingerprint Quantity	100	IoT Connection	Optional
Card Type	Mifare/13.56MHz	Door Category	Wooden, Anti-burglary Door, Steel
Card Quantity	100	Door Thickness (mm)	38-120

- 
Remote Control
- 
Card
- 
PIN code
- 
Bluetooth
- 
APP
- 
Key



Rim Lock



R6-2
Vertical



R6-2H
Horizontal



R6-2K
Gate Lock



Security Functions

Auto Locking | Privacy Mode | Fake PIN Code | Lockout Mode | Away Mode

Alarming/Indication

Low Voltage | Wrong-Entry Alarming | Jam Alarming

Color  Black

Product Specification

Models	R6-2 R6-2K R6-2H	Keypad Type	Touchpad
Card	Yes	Code Length	6-12
Main Material	Aluminum Alloy	Code Quantity	11 (1 Master Code; 10 User Codes)
Mortise Type	NA	Working Voltage	DC 6V
Vertical Rods	NA	Battery	4 AA Alkaline Batteries
Voice Guide	Yes	Working Temperature(℃)	-20-60
Handing	Universal	Emergency Power	5V Micro USB
Emergency Cylinder	No	RH (%)	20-90
Fingerprint Sensor	No	IoT Connection	Optional
Fingerprint Quantity	NA	Door Category	Wood, Anti-burglary Door, Steel
Card Type	Mifare/13.56MHz	Door Thickness(mm)	30-50
Card Quantity	100		



Remote Control



Card



Fingerprint



PIN code



Bluetooth



APP



Key



Rim Lock



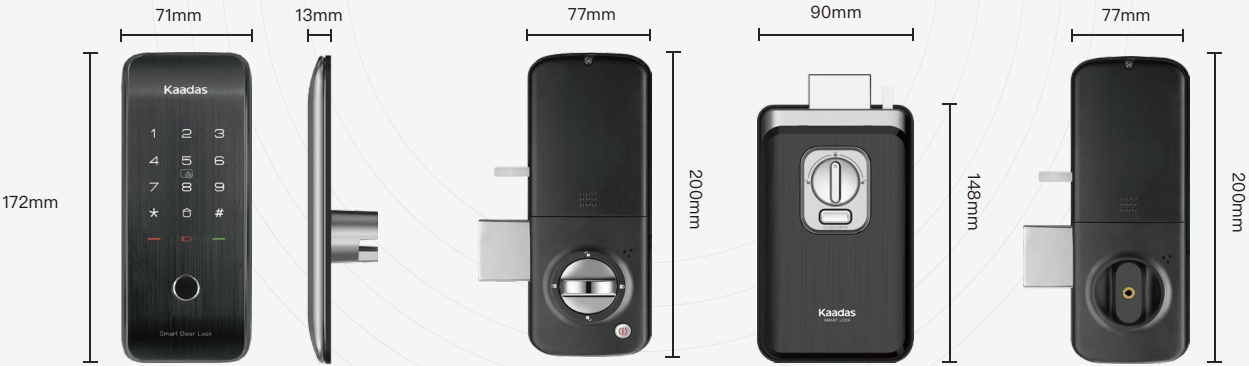
R6-5
Vertical



R6-5H
Horizontal



R6-5K
Gate Lock



Security Functions

Auto Locking | Privacy Mode | Fake PIN Code | Lockout Mode | Away Mode

Alarming/Indication

Low Voltage | Wrong-Entry Alarming | Jam Alarming

Color  Black

Product Specification

Models	R6-5 R6-5K R6-5H	Keypad Type	Touchpad
Card	Yes	Code Length	6-12
Main Material	Aluminum Alloy	Code Quantity	11 (1 Master Code; 10 User Codes)
Mortise Type	NA	Working Voltage	DC 6V
Vertical Rods	NA	Battery	4 AA Alkaline Batteries
Voice Guide	Yes	Working Temperature(°C)	-20-60
Handing	Universal	Emergency Power	5V Micro USB
Emergency Cylinder	No	RH (%)	20-90
Fingerprint Sensor	Semiconductor	IoT Connection	Optional
Fingerprint Quantity	100	Door Category	Wood, Anti-burglary Door, Steel
Card Type	Mifare/13.56MHz	Door Thickness(mm)	30-50
Card Quantity	100		



PIN code



Card



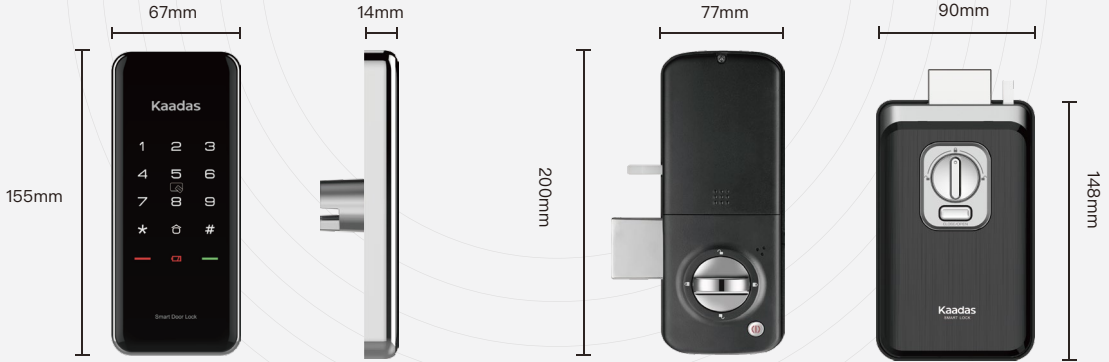
Rim Lock



R5-2
Vertical



R5-2H
Horizontal



Security Functions

Auto Locking | Privacy Mode | Fake PIN Code | Lockout Mode | Away Mode

Alarming/Indication

Low Voltage | Wrong-Entry Alarming | Jam Alarming

Color  Black  Silver

Product Specification

Models	R5-2 R5-2H	Keypad Type	Touchpad
Card	Yes	Code Length	6-12
Main Material	Aluminum Alloy	Code Quantity	21
Mortise Type	NA	Working Voltage	DC 6V
Vertical Rods	No	Battery	4 AA Alkaline Batteries
Voice Guide	Yes	Working Temperature(°C)	-20-60
Handing	Universal	Emergency Power	5V Micro USB
Emergency Cylinder	No	RH (%)	20-90
Fingerprint Sensor	No	IoT Connection	No
Fingerprint Quantity	NA	Door Category	Wood, Anti-burglary Door, Steel
Card Type	Mifare/13.56MHz	Door Thickness(mm)	30-50
Card Quantity	50		

Kaadas



RX-C
Deadbolt Lock



Bluetooth

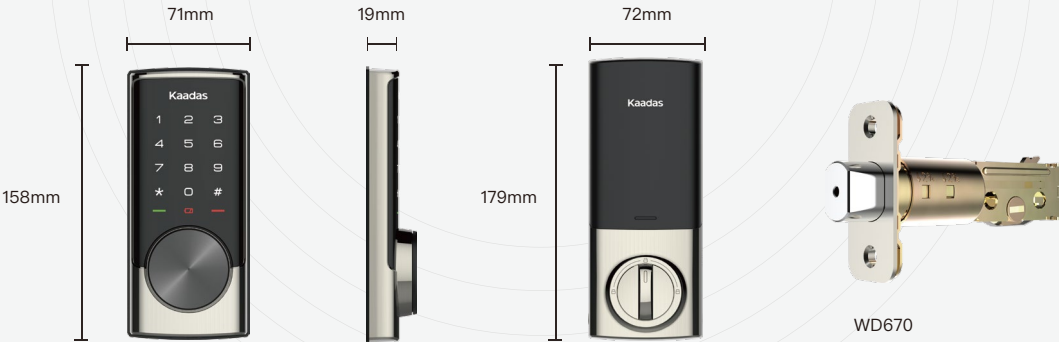


PIN code



Mechanical Key

Kaadas



Security Functions

Auto Locking | Away Mode | Fake PIN Code | Lockout Mode |
One-Time PIN Code

Alarming/Indication

Low Voltage | Wrong-Entry Alarming | Jam Alarming



Color

Satin Nickel

Oil Rubbed Bronze

Product Specification

Main Material	Aluminum Alloy	Keypad Type	Touchpad
Bolt Type	Deadbolt	Code Length	4-10
Handle	No	Code Quantity	21
Voice Guide	Yes	Working Voltage	DC 6V
Auto Locking	Yes	Battery	4 AA Alkaline Batteries
Handing	Universal	Working Temperature (°C)	-20-60
Emergency Cylinder	Yes	Emergency Power	5V Micro USB
Fingerprint Sensor	No	RH (%)	20-90
Fingerprint Quantity	NA	IoT Connection	Optional
Card Type	NA	Door Category	Wood, Anti-burglary Door, Steel
Card Quantity	NA	Door Thickness (mm)	35-50

Kaadas



RX-D
Lever Lock



Bluetooth

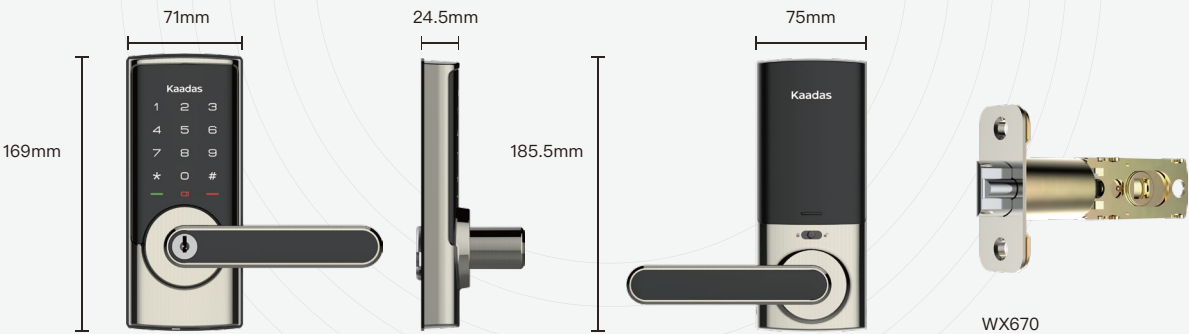


PIN code



Mechanical Key

Kaadas



Security Functions

Fake PIN Code | Lockout Mode |
One-Time PIN Code | Passage Mode

Alarming/Indication

Low Voltage | Wrong-Entry Alarming



Product Specification

Main Material	Aluminum Alloy + Zinc Alloy	Keypad Type	Touchpad
Bolt Type	Latchbolt	Code Length	4-10
Handle	Yes	Code Quantity	21
Voice Guide	Yes	Working Voltage	DC 6V
Auto Locking	No	Battery	4 AA Alkaline Batteries
Handing	Universal	Working Temperature (°C)	-20-60
Emergency Cylinder	Yes	Emergency Power	5V Micro USB
Fingerprint Sensor	No	RH (%)	20-90
Fingerprint Quantity	NA	IoT Connection	Optional
Card Type	NA	Door Category	Wood
Card Quantity	NA	Door Thickness (mm)	35-50



HL01

Lever Lock



Fingerprint

Kaadas



Security Functions

Auto Locking | Away Mode | Lockout Mode

Alarming/Indication

Low Voltage | Wrong Entry Limit

Color Satin Nickel Black



Product Specification

Main Material	Aluminum Alloy	Battery	4 AA Alkaline Batteries
Working Voltage	DC 6V	Working Temperature	-20-55°C
Handing	Universal	Door Category	Wood
Keypad Type	N/A	Door Thickness	35-55mm
Bolt Type	Latch Bolt	RH (%)	20-90
Code Capacity	N/A	Auto Locking	Yes
Code Length	N/A	IP Rating	IP34
Fingerprint Capacity	50	Emergency Power Port	Yes
Override Cylinder	N/A	IoT Connection	No
Voice Guide	Yes	Card Type	N/A
Handle	Yes	Card Quantity	N/A



K241
Lock Box



PIN code



Bluetooth



APP



Fingerprint



RGB Led Indicator



Support OTA DFU



Security Functions

Doorcode Test Ban | Fake PIN Code

Alarming/Indication

Low Voltage | Wrong-Entry Alarming



Color
Matt Silver

Product Specification

Models	K241	Keypad Type	Capacitive Touch Keyboard
Main Material	Aluminum Alloy	Code Length	6-10
Box Space	89*63*25mm	Box Size	123*73*50.6mm
Storage Capacity	Fingerprint + PIN code = 100pcs (Fingerprint<50pcs)	Wireless Standards	Bluetooth Low Energy (BLE4.2)
Doorcode Backlight	Independent Digital Display	Material Thickness	2.5mm
Power Type	3 x Alkaline AAA Batteries, 2 x CR123A Batteries	Compatible Smartphone	iOS and Android
Fingerprint Sensor	Yes	RH (%)	40-80
FRR/FAR	FRR<2%, FAR<1/100000	Fix by Shackle	Applicable to the door with handle.
Emergency Power Supply Interface	Type C	IoT Connection	Yes
Operating Temperature	-20℃-70℃ (3 x Alkaline AAA Batteries) -40℃-70℃ (2 x CR123A Batteries)	Users Management	Manage the unlocking permissions.
Protection Level	IP66	Remote Sharing	Share the App unlocking permission remotely.
Salt Spray Test	200 Hours	Certifications	GB4943.1-2011、CE-RED、FCC、RoHS、IP66、TELEC



K221
Lock Box



PIN code



Bluetooth



APP



RGB Led Indicator



Support OTA DFU



Security Functions

Doorcode Test Ban | Fake PIN Code

Alarming/Indication

Low Voltage | Wrong-Entry Alarming



Color
Matt Silver

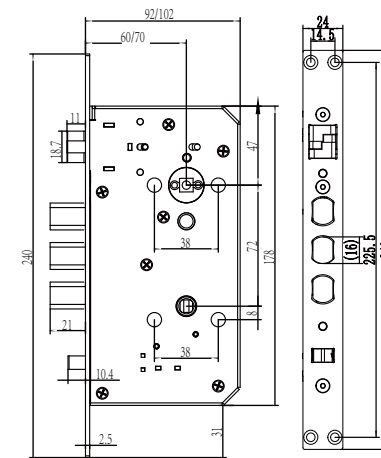
Product Specification

Models	K221	Keypad Type	Capacitive Touch Keyboard
Main Material	Aluminum Alloy	Code Length	6–10
Box Space	89*63*25mm	Box Size	123*73*50.6mm
Code Quantity	100	Wireless Standards	Bluetooth Low Energy (BLE4.2)
Doorcode Backlight	Independent Digital Display	Material Thickness	2.5mm
Power Type	3 x Alkaline AAA Batteries, 2 x CR123A Batteries	Compatible Smartphone	iOS and Android
Fingerprint Sensor	No	RH (%)	40–80
Emergency Power Supply Interface	Type C	IoT Connection	Yes
Operating Temperature	–20°C–70°C (3 x Alkaline AAA Batteries) –40°C–70°C (2 x CR123A Batteries)	Users Management	Manage the unlocking permissions.
Protection Level	IP66	Remote Sharing	Share the App unlocking permission remotely.
Salt Spray Test	200 hours	Certifications	GB4943.1–2011、CE–RED、FCC、RoHS、IP66、TELEC

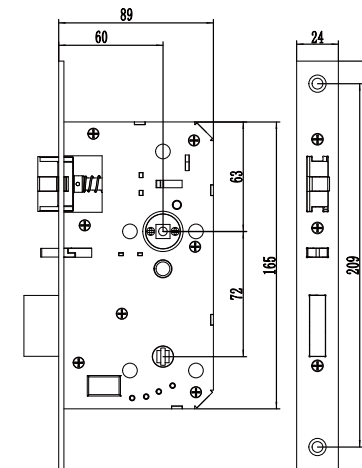
Mortise Options

Multiple mortise options for different applications

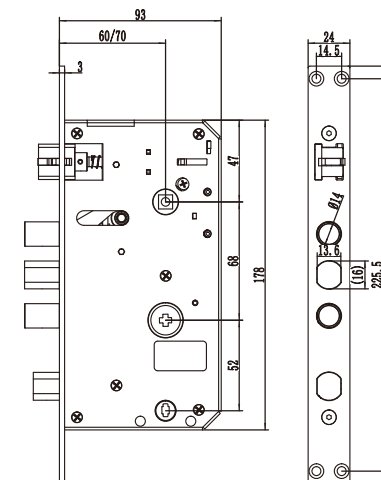
Mortise	Backset	Center Distance	Automatic	Locks
924C	60 70	72	Yes	K13F/K13W/K20-F/K10-W/K9
724F	60 70	72	Yes	L7/L8
524	60 70	68	No	S100
WD670	60 70	/	/	RX-C
WX670	60 70	/	/	RX-D/HL01



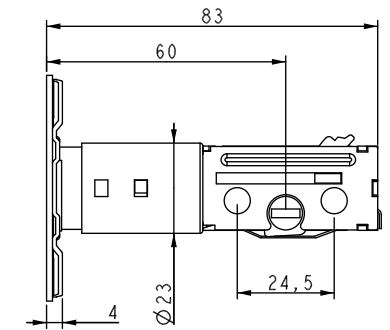
924C



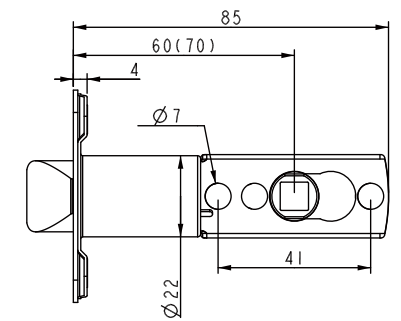
724F



524



WD670



WX670

